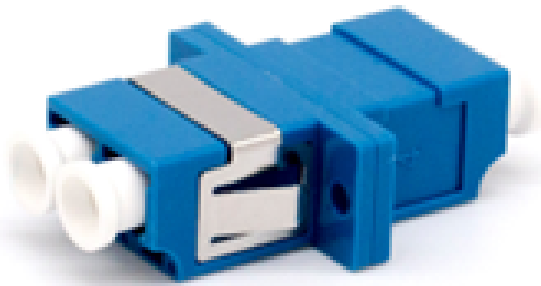


Adapter duplex LC - LC Single-mode optical fiber

SP-ADAP-LC/SM



Features

- Corrosion resistant
- Supports UPC Connection
- Insertion loss: UPC - PC < 0.30 dB
- Durability: 1000 insertions
- Temperature: (-40° F to +75°C)
- Single-mode fiber
- ANSI/TIE/EIA 568.B.3